

HUTT VALLEY TENNIS INC

2011-2012



67TH ANNUAL REPORTS

AND

FINANCIAL STATEMENTS

FOR THE YEAR ENDED 30th APRIL 2012

TO BE HELD AT MITCHELL PARK

MONDAY, 27th AUGUST 2012 AT 7.30PM

HUTT VALLEY TENNIS AND MITCHELL PARK SQUASH CLUB
WISH TO THANK THE FOLLOWING SPONSORS



Hutt City Council



**New Zealand
Community Trust**



Pelorus Trust



Pub Charity



**The Lion
Foundation**

- **Malcolm Nielson
Consulting Engineers**
 - **McCormack Group
Limited**
 - **Slazenger**
- Vegas Blasting and
Painting**



TABLE OF CONTENTS

HUTT VALLEY TENNIS INC.....	4
AGENDA	4
OFFICERS.....	5
CHAIRMAN'S REPORT 2011/12	7
COMPLEX MANAGER REPORT 20011/12	10
TCR WELLINGTON REGIONAL INTERCLUB	12
SENIOR INTERCLUB RESULTS 2011 – 12 SEASON.....	13
MIDWEEK SUMMER INTERCLUB RESULTS 2011-2012.....	17
HUTT VALLEY TENNIS - JUNIOR REPORT 2011-2012.....	18
COMPLEX MAINTENANCE REPORT	24
FINANCIAL STATEMENTS	27
MINUTES OF PREVIOUS AGM	44

67th Annual General Meeting and Financial Statements

for the year ending 30th April 2012

Held at Mitchell Park on Monday 27th August 2012

AGENDA

1. Welcome
2. Apologies
3. Roll Call
- Confirmation of the minutes of the Previous Annual General Meeting held on the 29th August 2011
4. Consideration and adoption of the Annual Reports
5. Consideration and adoption of the Financial Report
6. Election of Officers: President Treasurer Secretary
7. Election of Management Committee (12)
8. To appoint: Patron Auditor Honorary Solicitor
9. To fix membership Fees and Levies
10. Consider Motions of which due notice has been given.
11. Other Business:

OFFICERS

PRESIDENT	Wayne Dahlberg
CHAIRPERSON	Joe Glover
TREASURER	Ross Bisley
SECRETARY	Craig Eves

MANAGEMENT COMMITTEE

Peter Calder, Les Stewart, Trevor Dine, Jackie Clarke, John Horrocks,

Committee Attendance (max 11)

Wayne Dahlberg (8), Ian Miller (10) Ross Bisley (10), Craig Eves (11),

Peter Calder (8), Joe Glover (10),

Les Stewart (7), Trevor Dine (10), Jackie Clarke (9), John Horrocks (10),

AUDITOR

MARKHAM, MILLER AND DEAN

HONORARY LIFE MEMBERS

Barrie Shute (1988), Warwick Wyatt (1994),

Gary Nelson (1997), Joan Wells (1997), Paddy Wells (2006), Dick
Werry (2011),

HUTT VALLEY TENNIS INC MEMBERSHIP 2011/2012

CLUB	7/8	08/09	9/10	10/11	SENIOR		JUNIOR		U 12YR		Total
					M	F	M	F	M	F	
Avalon	120	115	118	137	31	33	27	20	16	12	139
Epuni School	18	18	15	15		15					0
Glen Iris	123	91	106	54			17	13	10	14	0
Lower Hutt	313	286	308	265	63	63	50	38	27	22	263
Maungaraki	164	178	162	173	42	32	27	11	25	12	149
Muritai	203	130	149	122	23	24	23	13	9	7	99
Petone	27	21	22	75	31	33	19	10	13	20	126
Pinehaven	161	162	136	135	19	31	18	14	25	15	122
Stokes Valley	97	79	94	84	16	30	21	10	4	9	90
Upper Hutt	94	91	80	64	11	5	22	12	3	4	57
Wainuiomata	79	90	100	115	27	24	8	10	12	5	86
TOTALS	1399	1261	1286	1239	263	275	215	138	134	106	1131

CHAIRMAN'S REPORT 2011/12

HVT COMMITTEE: The administration of tennis in the Hutt Valley is performed by the dedicated few on the committee. All the members of the HVT committee give up their free time to ensure that the Mitchell park complex is maintained, the events run smoothly and the accounts balance. I would like to take the opportunity to thank all the HVT committee for the work they have done this past year.

Every organisation has to have a treasurer. We have been lucky to have Ross Bisley who has given his tireless efforts over the years. Ross has done a great job not just on the accounts but also helping out with the proshop. Ross is not continuing in this role so this year we urgently need a volunteer or the role will be professionally covered & the cost paid for by the members.

Thanks to Wayne Dahlberg, our President, especially for his help solving the tennis/squash fund discrepancy. Wayne did a lot of investigation, collated and analysed all the figures that were needed to solve it.

I would like to make a special mention of Ian Miller, who resigned from the Committee to take up a role at Tennis Central. He has continued to support the committee in many ways and has devoted a huge amount of his time, working with Wayne to solve the Tennis/Squash fund.

JUNIOR TENNIS:

Junior tennis is the seed for future tennis success. It needs a strong focus and committed people to make it a success. The Junior Convenors role is to organise and run Junior Interclub, Rep fixtures and tournaments. Peter Calder has spent a huge amount of time doing all of this. Luckily for us he has an understanding and helpful partner, Sandra, who has also put a lot of her free time into helping and specifically running the rep fixtures. Thank you, Peter and Sandra, for all your work.

The Tournaments continue to run at a profit and we have received excellent feedback on the standard of the tournaments we run.

Because of the scope of the junior role, and the amount of time it involves, this role should be split between 2 to 3 people.

SENIOR TENNIS:

Senior Tennis has been organised by Trevor Dine. The main event is Interclub and the problem we are faced each year is securing sufficient courts to be able to run all the matches on Saturday afternoons. If the number of Senior teams continue to increase, we will be forced to run interclub on Friday nights or Sunday. We have scheduled a Senior Open tournament but with no support it was difficult to market & encourage enough participants to make it viable.

PRESIDENTS GRADE:

The Presidents grade has only a few teams and so the competition ends up with small draws and consequently is not very 'competitive'. This is an area where we need fresh blood to help and promote the grade & try to get more teams and enthusiasm.

MITCHELL PARK COMPLEX:

The renovations at Mitchell Park are almost complete.

The new courts with the blue/green combination and new black fences look quite impressive. The new blue courts have, after a season use, received a mixed reaction but overall the comments are positive. As the majority of the money had to be raised from grants and council contribution, we had a limit on what we had to spend. The surface that was chosen was the best that could be bought within the budget available.

The front courts are on the plan to be replaced shortly with a high quality surface to provide us with 4 show courts.

Andrew Chuah has been a great asset to the complex. He has managed & run the complex with professionalism. The Proshop has done well over the year and Andrew always has a welcoming greeting to anyone entering the shop. The Business house tennis is administered by Andrew and this continues to be successful.

Overall the complex receives plenty of praise from players and visitors. Thank you to all those involved for making this happen.

COACHING:

It is sad to see Chuck & Mariska Swartz leave the complex after they have made such an impression improving the coaching at Mitchell Park.

We are currently recruiting a new coach for the complex.

MIDWEEK LADIES:

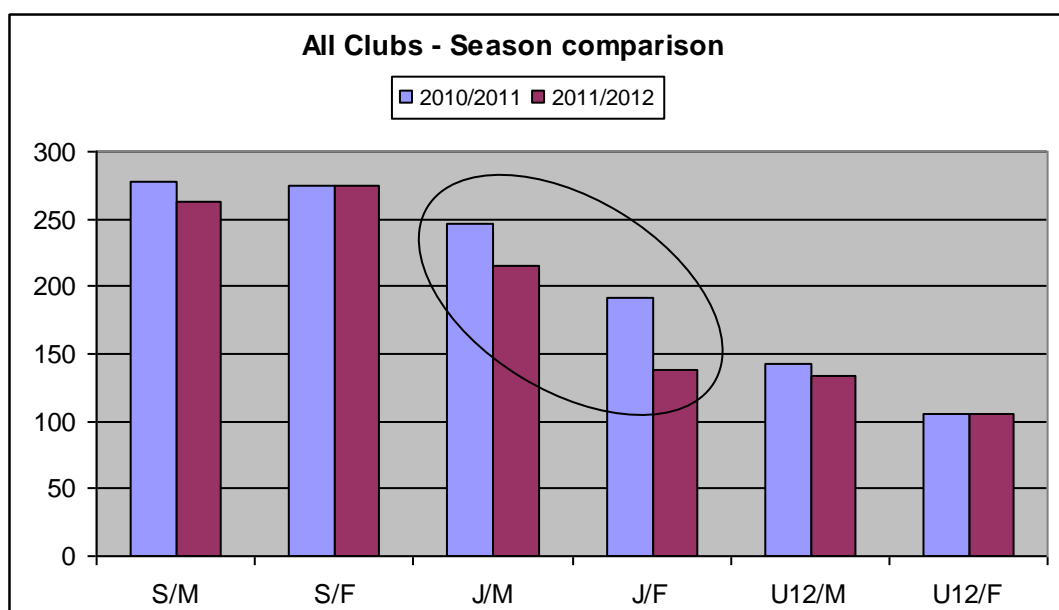
Jackie Clark continues to organise and control the midweek ladies tennis. Jackie does an awesome job as we seldom hear of any problems.

THE FUTURE:

The current years membership numbers have dropped from the previous years.

CLUB	MEMBERSHIP TOTALS 2010/2011							CLUB	MEMBERSHIP TOTALS 2011/2012						
	Senior		Junior		U12		Total		Senior		Junior		U12		Total
	S/M	S/F	J/M	J/F	U12/M	U12/F			S/M	S/F	J/M	J/F	U12/M	U12/F	
Avalon	32	35	25	22	15	8	137		31	33	27	20	16	12	139
Epuni		15					15								0
Glen Iris			17	13	10	14	54								0
Lower Hutt	59	49	61	43	29	24	265		63	63	50	38	27	22	263
Maungaraki	50	36	32	20	21	14	173		42	32	27	11	25	12	149
Muritai	22	26	26	24	13	11	122		23	24	23	13	9	7	99
Petone	41	34					75		31	33	19	10	13	20	126
Pinehaven	23	33	27	17	26	9	135		19	31	18	14	25	15	122
Stokes	15	17	15	12	10	15	84		16	30	21	10	4	9	90
Upper Hutt	10	4	29	20	1		64		11	5	22	12	3	4	57
Wainuioma	26	26	15	20	18	10	115		27	24	8	10	12	5	86
TOTALS	278	275	247	191	143	105	1239		263	275	215	138	134	106	1131

Looking at the figures it is hard to tell where the drop has been. By comparing the age groups in a graph it is obvious that the main drop is in Junior tennis.



As the juniors feed into senior tennis our overall numbers will continue to drop if this is not reversed. I suggest a new tennis racquet in favour of a Wii or PS3.

Tennis administration has its rewards and challenges. I would again like to thank everyone who has helped make HVT what it is. I would encourage you all to think to the future and think how we can go on to improve tennis, for ourselves and for everyone who enjoys tennis.

VOLUNTEERS

.A summary of volunteer time in 8 hour day equivalents is shown below – 75 weeks.

They will all be paid double next year.

Ross Bisley	65
Peter & Sandra Calder	85
Jackie Clarke	10
Wayne Dahlberg	25
Trevor Dine	15
Craig Eves	16
Ian Miller	45
Les Stewart	25
Joe Glover	60

Joe Glover

The Chairman HVT

COMPLEX MANAGER REPORT 20011/12

MITCHELL PARK COMPLEX

An exciting year has gone by with both codes squash and tennis having accomplished some great milestones using the Mitchell Park Complex and facilities. Firstly, with Mitchell Park Squash Club successfully held the prestigious Cousins Shield attracting a huge number of players and spectators to the Complex from around New Zealand. This National tournament is held at a different venue each year.

Tennis enjoyed a number of events, tournaments and regular interclub being played at the Mitchell Park Tennis Courts. The National Seniors Teams Event (veterans – mature players!) was held in April, 2012 and based at Mitchell Park and surrounding clubs to accommodate the large number of players from local and around New Zealand. The event was very successful and played in great spirit.

The Complex has also received a “facelift” inside with a new paint job and the upstairs wooden floor re-varnished giving the Complex a fresh look.

Working together with the Tennis, Squash and Executive Committee has been a pleasure and appreciate their “volunteer” time in making things happen around the Complex. Without these people a lot of things would not be possible and a likely increase in fees would have to occur. (A warm thank you to those involved: Ian, Miller, Ross Bisley, Jimmy Canning, Craig Eves, Wayne Dahlberg, Les Stewart, Jackie Clarke, Peter Calder, Jo Glover, Mike Ryan, John Horrocks, Trevor Dine, Tony Gambitsis and Tony Stallinger).

BUSINESS HOUSE LEAGUE

A steady number of teams have supported this League and on behalf of Hutt Valley Tennis would like to thank them for their support. The warmer season attracted a lot of teams and the tennis courts were mostly at full capacity. The winter months continued with play and highlighted the social and competitive nature of these teams. The comradeship and history of some of these teams dates back a very long time.

Winners Results for Wednesday:

Term 2, 2011 - RSB

Term 3, 2011 - RSB

Term 4, 2011 - Walton Wanderers

Term 1, 2012 – Squashies

Winners Results for Thursday:

Term 2, 2011 – HRD1

Term 3, 2011 – Hitting Fit

Term 4, 2011 – HRD1

Term 1, 2012 – HRD1

PRO SHOP

A respectable year considering the economy has been slow. Squash and tennis sales have increased over last 12 months. Shoes sales have increased and recognised that there is a demand for the serious players.

Regular emails to squash, tennis clubs and Tennis Central promoting specials and new product releases has increased the awareness of the Pro Shop and being part of Hutt Valley Tennis Inc. (Non profit organisation supporting tennis in the Hutt Valley).

The “price war” for club tennis balls is competitive and can proudly say the Pro Shop supports all Hutt Valley Clubs in giving them the lowest pricing for Slazenger tennis balls. We also set a benchmark for a fair market rate in the greater Wellington region.

The Pro Shop has commenced their online presence and will venture into this large area of opportunity. This is currently an area that has not reached its potential.

TENNIS COURT HIRE

Court hire revenue is slightly down from last year. With the introduction of more Tennis Coaches doing more hours at the Complex it is envisaged that revenue will increase for this year. The Astro Grass surface has allowed the coaches to teach even after there has been much rain and is evident that the surface chosen has been a very worthwhile investment.

The resident coaches – The Swartz School of Coaching have yet again had a successful year coaching and have again created a welcoming atmosphere to their students and also visitors.

Thank you to other coaches that have used our facilities – Gary Nelson, Jason Kane, Mark Flannery, Andrew Chuah and Mel Jansen.

Andrew Chuah

Complex Manager

TCR WELLINGTON REGIONAL INTERCLUB

RESULTS:

Wellington Regional Premier Competition Post Xmas:

Premier One Men's Grand Final Winner -Wellington; Runners-up - Thorndon
Premier One Women's Grand Final Winner -Ngatitoa; Runners-up - Wellington
Premier Two Men's Winner-Paraparaumu Beach; Runners-up - Lower Hutt
Premier Two Women's Winner -Lower Hutt 1; Runners-up - Wainuiomata
Premier Three Men's Winner Salamanca University; Runners-up - Lower Hutt
Premier Three Women's Winner Vogelmorn; Runners-up - Paraparaumu Beach
Premier Four Mens Winner Avalon Runners-up Vogelmorn
Premier Four Women's Winner Ngatitoa Runners-up Whitby

Pre Xmas Premier Promotion:

Premier One Men's Winner - Thorndon; Runners-up - Khandallah
Premier One Women's Winner -Wellington; Runners-up - Thorndon
Premier Two Men's Winner - Paraparaumu Beach; Runners-up - Tawa-Lyndhurst
Premier Two Women's Winner -Titahi Bay; Runners-up - Karori Lawn
Premier Three Men's Winner -Whitby; Runners-up - Lower Hutt
Premier Three Women's Winner - Pukerua Bay; Runners-up - Vogelmorn

Congratulations to all the players, teams and clubs on another successful year's competition.

It was again very refreshing to see the influx of young players to the competition willing to approach the competition with a positive attitude and the support proved to them by the more senior players and teammates. The competition can only go from strength to strength with clubs and players adopting such attitudes.

Thank you also to Frampton's Signs for their sponsorship of the Winter Regional Competition. This continues to be a popular competition over the Winter for mixed teams in the region.

Wayne Dahlberg

Chairperson,

Wellington Regional Tennis Committee

SENIOR INTERCLUB RESULTS 2011 – 12 SEASON

PRE-CHRISTMAS					
Mens Division 1		Mens Division 2		Mens Division 3	
Upper Hutt 1	50 P	Pinehaven 1	51 P	Upper Hutt 3	35 P
Lower Hutt 1	39 P	Lower Hutt 3	48 P	Pinehaven 2	28
Stokes Valley 1	32	Muritai 1	37	Upper Hutt 2	22
Avalon 1	30	Avalon 2	24	Petone 3	11
Wainuiomata 1	27	Avalon 3	24		
Petone 1	20	Petone 2	22		
Lower Hutt 2	13	Wainuiomata 2	13		
Maungaraki 1	13	Maungaraki 2	5		
Winners: Upper Hutt 1. Simon Osborne, Kevin Hinton, Duncan Hunter, Scott Hunter, Paul Edwards, Mike Quinn		Winners: Pinehaven 1. Derek Murray, Adam Ross, Andrew Wyllie, Mark Hurly, Paul Bennett		Winners: Upper Hutt 3. Kristin & Dave Yorston, Dan Kai, Lawson Davison, Aniruddh Kirtikar	

POST-CHRISTMAS					
Mens Division 1		Mens Division 2		Mens Division 3	
Lower Hutt 3	39	Upper Hutt 3	39	Pinehaven 2	35
Pinehaven 1	35	Avalon 3	37	Stokes Valley 2	26
Avalon 1	34	Muritai 1	35	Upper Hutt 2	25
Lower Hutt 2	34	Avalon 2	26	Petone 3	10
Stokes Valley 1	32	Wainuiomata 2	12		
Wainuiomata 1	20	Petone 2	9		
Maungaraki 1	15	Maungaraki 2	2		
Petone 1	15				
Winners: Lower Hutt 3. David Silcock, Tyler Titov-Smith, Jordan Musgrave, Mike Holdsworth, Ross Mitchell		Winners: Upper Hutt 3. Kristin & Dave Yorston, Dan Kai, Lawson Davison, Aniruddh Kirtikar		Winners: Pinehaven 2. Harry Kerr, Michael Badart, Sam Turner, Etienne de Haan, Robin Wyllie	

Womens Pre-Xmas		Womens Post-Xmas	
Maungaraki	52 P	Petone	36
Wainuiomata 1	51 P	Wainuiomata 2	33
Petone	37	Upper Hutt	24
Wainuiomata 2	35	Lower Hutt Blue	16
Lower Hutt Blue	29	Lower Hutt Red	16
Upper Hutt	24	Avalon	14
Lower Hutt Red	15	Wainuiomata 3	5
Avalon	8		
Wainuiomata 3	5		
Winners: Maungaraki. Jan Milne, Audrey Daly, Jeanette Stanley, Amy Galloway, Ruby Lawler .		Winners: Petone. Donna Campbell, Kirsty Alexander, Angila Su'a, Emily Su'a-Dunn, Rebecca Bourne, Kiri Campbell.	

“P” denotes teams that have been promoted.

PRESIDENTS PRE-CHRISTMAS			
PRE-CHRISTMAS		POST-CHRISTMAS	
Petone 4	37	Petone 1	42
Petone 1	29	Petone 4	33
Maungaraki	27	Petone 3	27
Petone 3	22	Petone 2	26
Petone 2	7	Maungaraki 2	22
Lower Hutt 1	6	Lower Hutt 1	15
Lower Hutt 2	0	Lower Hutt 2	3
Winners: Petone 4 Wendy Hartley, Siloma Masina, Chhagan Chhima, Allen Tso		Winners: Petone 1. Warren Nelson, Paddy Wells, Kathryn Young, Cilla Heymer.	

Honours were shared among many of the clubs for both the pre and post Christmas competitions.

In the Men's pre-Christmas competition Upper Hutt 1 dominated Division 1. This team along with Lower Hutt was promoted to Regional 3. Pinehaven 1 narrowly beat Lower Hutt 3 for the Division 2 title. Upper Hutt won Division 3 ahead of Pinehaven 2. In the post-Christmas competition Lower Hutt 3 won Division 1, Upper Hutt 3 won Division 2 and Pinehaven 2 won Division 3. It was worth noting that both Division 1 and 2 were won by teams that had been promoted from the pre-Christmas competition.

The Womens Division 1 pre-Christmas competition was won by Maungaraki, one point ahead of Wainuiomata. Both were promoted to Regional 3. The post-Christmas competition was won by Petone.

In the coming season Lower Hutt, Wainuiomata and Upper Hutt teams for men, and Wainuiomata and Wainuiomata for women, come down from Regional. This may be a disappointing result for these teams but it will help to fill the gaps that we have in the Divisional grades.

Presidents tennis, both pre and post Christmas was completely dominated by Petone. This is a significant change from recent years which have been dominated by Glen Iris. ☺ A number of people are working to get more teams into this competition.

CHAMPION OF CHAMPIONS TOURNAMENT

This event is played between the club champions (or nominated players) from each club in the Hutt Valley Association to decide the champion of the association.

WINNERS

MENS SINGLES

- 1 Michael McGlinchey [1/2]
- 2 Trevor Dine
- 3/4 Rory Murchland

MENS DOUBLES

- 1 Jacob Emery [1/2]
Jason Kane
- 2 Mathew Gibbons
James Wilkie
- 3/4 Mark Hurly
Adam Turner
- 3/4 Aidan Cogger [2/2]
Michael McGlinchey

LADIES SINGLES

- 1 Tania Martin [1/2]
- 2 Jan Milne [2/2]
- 3/4 Taka Hurly
- 3/4 Angila Su'A

LADIES DOUBLES

- 1 Audrey Daly
Jan Milne
- 2 Cilla Heymer
Kathryn Young

MIXED DOUBLES

- 1 Jason Kane
Audrey Daly
- 2 Bradley Duncan [1/1]
Tania Martin
- 3/4 Brian Dahm
Donna Campbell

Trevor Dine Interclub Convenors

MIDWEEK SUMMER INTERCLUB RESULTS 2011-2012

The 2011/12 midweek competition had two grades. The number of midweek members has been declining over the past few years but we have managed to have the same amount of teams as last season. There were 10 in A grade and 9 in B grade.

The Lower Hutt 1 team of Janice O'Sullivan, Sheryl Edgar, Barb Van Baarle, Jackie Clarke and Christine Barnett won A grade on a countback of games. The Paekakariki team of Joan Hilder, Val Leavesley, Val Potts, Judy Button and Dawn Melrose won B grade. The results of the competition were:-

A GRADE

1	Lower Hutt 1	59
2	Epuni	59
3	Maungaraki	48
4	Upper Hutt	42
5	Lower Hutt 2	38
6	Whitby	35
7	Lower Hutt 3	35
8	Pinehaven	21
9	Petone	21
10	Avalon 1	

B GRADE

1	Paekakariki	48
2	Avalon 2	44
3	Petone	42
4	Avalon 1	42
5	Stokes Valley	32
6	Avalon 1	31
7	Lower Hutt 1	27
8	Avalon 3	11
9	Lower Hutt 2	9

The Interclub Cup was won by Lower Hutt, 2nd Paekakariki, and 3rd equal to Epuni and Avalon. A play-off was held for A grade for next season between Avalon 1 and Paekakariki. Avalon 1 won so will retain their place in A grade.

Jeannie Russell from Epuni was the highest aggregate for A grade on 93.12% but the Highest Aggregate Cup was won by Gretchen Campbell of Muritai playing in B grade on 95.67%.

Due to bad weather on Wednesdays we were unable to hold our end of season tournament and prizegiving. Hopefully the weather will be kind to us next year and we can hold this annual tournament.

Jackie Clarke

Midweek Convenor

HUTT VALLEY TENNIS - JUNIOR REPORT 2011-2012

JUNIOR INTERCLUB 2011 / 2012

A huge thank you to all HVT Club's Junior Conveners and all the Team Managers for their support in organising and managing their respective junior interclub teams and for also assisting with inputting results into Configure Rankings. Again a huge thanks to Joe Glover for his work on the scheduling of interclub matches at HV tennis clubs, Mitchell Park and school venues – this is not an easy task as schools are having their courts used for netball and this sport is starting earlier and earlier in the new year. Thanks once again to PrintStop+ in Waterloo Rd Lower Hutt for printing all the masses of certificates (well over 250 in all).

The current grading of Junior Interclub has proved to be a successful format, having deleted an age-based format and going for an ability-based grading system (i.e. by deleting the Under 12's grades), thereby making all Junior Interclub grades based on player ability and merit, not age, and this has proved so particularly with the post-Christmas promotion & relegation process. Junior Interclub also continued successfully on ConfigureRankings this year, allowing Team Managers and/or Junior Conveners to input results, players/teams to see their rankings, and though there is considerable work in the setting-up process, after that the work is rapidly diminished. Thanks also must go to Chris Raynes of Tennis NZ for his support too.

A somewhat reduced number of teams were entered for both the Pre-Christmas competition with 75 teams (2010 = 86) and the Post-Christmas competition with 82 teams (2011 = 87) a decrease of 12% and 5% respectively over the previous year – this lead to one boys Division not being filled. A large number of both Junior Girls and Junior Boys are playing both Regional interclub and Senior Interclub and as this is cyclical the numbers of teams annually will always ebb and flow. Excluding those juniors playing Senior Interclub and Regional Junior Interclub this still left well over 420-450 juniors to play in each of the Pre & Post Christmas Junior Interclub competitions. Schools needing courts for earlier netball trials than we've previously experienced and in some cases courts being refurbished took them out of play altogether. Demand for the new winter interclub is strong across both adults and juniors, with over 85 entrants playing in this competition.

NUMBER OF TEAMS ENTERED

Teams	Pre-Christmas 2011	Post-Christmas 2012
Avalon	8	9
Lower Hutt	21	23
Maungaraki	5	5
Muritai	11	12
Petone	7	8
Pinehaven	7	7
Stokes Valley	4	5
Upper Hutt	5	6
Wainuiomata	7	7
Totals	75	82

JUNIOR INTERCLUB RESULTS 2011 / 2012

Grade	Pre-Christmas 2011		Post-Christmas 2012	
	Winners	Runners-Up	Winners	Runners-Up
Boys Premier A	L/Hutt Murray	Wainui Nike	L/Hutt Murray	P/Haven Phantoms
Boys Premier B	Murитай Penguins	L/Hutt Federer	U/Hutt Return	L/Hutt Ferrer
Boys Division 1	L/Hutt Fish	L/Hutt Soderling	Petone Blues	Wainui Mizuno
Boys Division 2	S/VKamahi Karzies	Avalon Puma	L/Hutt Almagro	L/Hutt Berdych
Boys Division 3	L/Hutt Tsonga	L/Hutt Simon	Murитай McEnroes	Wainui Converse
Boys Division 4	Murитай McEnroes	Avalon Kauri	Avalon Totara	L/Hutt Wawrinka
Girls Premier A	L/Hutt Sharapova	SV/PH Mercer	L/Hutt Sharapova	L/Hutt Azarenka
Girls Premier B	L/Hutt Li Na	Petone Magic	L/Hutt Kvitova	Wainui Reebok
Girls Division 1	L/Hutt Kvitova	U/Hutt Topspin	S/Valley Hunter	Murитай X-Factor
Girls Division 2	P/Hvn Terminetters	Murитай Dolphins	Avalon Pohutukawa	Petone Sting
Girls Division 3	Maungaraki Team3	U/Hutt Backhand	Avalon Kowhai	U/Hutt Force

Prizegiving was held in the lounge at Mitchell Park on Sunday 6th May at 2:00pm and was attended by over 60+ people – this was followed by an afternoon tea and a chance to reflect on another very successful season followed by a fun hit-up for the juniors. Again, huge thanks to PrintStop+ in Waterloo Rd Lower Hutt for providing all the printing of well over 250 certificates.

The season this year will continue with the Winter Interclub teams of 2 playing one double and a single each. All results will be on ConfigureRankings and all entry fees will be designated for the renovations at Mitchell Park.

2011 HVT JUNIOR WINTER TOURNAMENT SAT 23RD – WED 27TH JULY (+ THURS 28TH & FRI 29TH)

A huge thank you to Joe Glover (also Russell Stoupe & Ian Miller plus some very helpful teenage helpers) for again running a very efficient tournament and inputting results into Tournament Planner for displaying the upcoming matches on a computer screen in the Tournament Office window, while I attended to parents, players, registrations, certificates, prizegivings and the general running of this tournament. Thank you to Mercedes Glover & Krystal Glover who ran a very successful kitchen throughout this tournament. Yet again bad weather took its toll and necessitated in a large number of matches having to be played on the Thurs and Fri following the normal tournament finish day of Wednesday. Overall we had a tremendous field with 258 entries (137 players) across 4 age groups and 16 events/draws for both Girls and Boys though unfortunately no 18s were fielded. The entries for this tournament way exceeded last year's event.

	Boys		Girls	
	Championship	Consolation	Championship	Consolation
10s Singles	I Becroft	J Naylor	T Anderson	M Takitimu
Runner Up	J Wallace	A Humphries	A Tapiata	L Jansen
10s Doubles	I Becroft/J Wallace	J Hodder/ A Humphries	T Anderson/A Tapiata	N/C
Runner Up	H Hibbert/J Smith	W Morrison/T Young	L Jansen /M Takitimu	N/C
12s Singles	F Humphries	G Stoupe	J Chuah	C Robinson
Runner Up	J Snowden-Poole	B Mckibbin	M Henderson	A Albert
12s Doubles	K Rooney/J Snowden-Poole	P Hartono/T Hartono	J Chuah/O McCormack	A Lawson/G Mclean
Runner Up	F Humphries/T Massam	I Becroft/ G Stoupe	T Anderson/A Tapiata	A Albert /M Dai
14s Singles	D Miller	T Massam	N Albert	A Galloway
Runner Up	H Humphries	R Murchland	P Anderson	H Cumming
14s Doubles	C Hudson/ H Humphries	R French/T Mitchell	N Albert /P Anderson	G Justice /J-L Richards
Runner Up	A Calder/D Miller	A Cogger/M Fenton	C Brader/S Salisbury	N/C
16s Singles	D Miller	N Barr	S Massam	O Wells
Runner Up	C Hudson	J Beere	A Caskey	L Beere
16s Doubles	D Miller /T Petersen	H MacLennan/D Silcock	J Andrew/S Massam	L Beere /A Caskey
Runner Up	C Hudson/ J McGregor	N Barr/T Mckenzie	N Albert /O Wells	A Galloway/E Murchland

R/O = Rained off

N/C = Not Contested

HVT Players in bold

2011 JUNIOR SCHOOLS TOURNAMENT – BOYS 20TH SEPTEMBER AND GIRLS 27TH SEPTEMBER

Thanks to Mel Jansen, Kim Massam and the parents who assisted to ensure the smooth running of this tournament. We had 108 entries from 94 players in 11 events/11 draws over the 2 days.

Qualifiers for the Central Zone finals in order were:-

Girls Open	- Jennifer Chuah, Meg Henderson, Stephanie Calder
Girls Intermediate	- Holly Cumming, Rachel Jina
Girls Yr 6 & Under	- Jemima Jansen, Shaunee Mahuika
Boys Open	- Alex Calder, Felix Humphries, Trent Massam, Angus Liddell
Boys Intermediate	- Finley Hall
Boys Yr 6 & Under	- Isaac Becroft, Harry Hunter

2011 AMI TENNIS CENTRAL PRIMARY / INT CHAMPS WAS HELD AT PALMERSTON NORTH ON 4TH NOV

Hutt Valley winners and runners up respectively were:

Boys Open	- Alex Calder, Felix Humphries
Boys Intermediate	- Finley Hall
Boys Yr 6 & Under	- Isaac Becroft, Harry Hunter

2011 HVT JUNIOR XMAS TOURNAMENT SAT 17TH – WED 21ST DECEMBER

Another huge thank you to Joe Glover and the team of very helpful teenagers for the excellent work in running the tournament draws, computer input into Tournament Planner and the organising of some 555 matches across 5 days of play – no mean feat considering the trying weather conditions during Saturday resulting in some 140 matches being completed on the Sunday – a record for matches played in one day. Many thanks must also go to those parents who assisted in the Tournament Office for helping with scheduling as well. Thanks also must go to Mercedes Glover, Krystal Glover and Devin Glover, who very ably catered for the 5 days throughout the tournament, in the kitchen. Overall we had an excellent field with 398 entries across 4 age groups, 16 events / 32 draws for both Girls and Boys – a little down on the previous year due to fewer players entering 2 age groups. Unfortunately there were no 18s in this tournament but very good numbers were received across the Boys and Girls 10s, 12s, 14s and 16s events.

Another huge success under very tiring circumstances and everyone was very complimentary on how well the tournament was run.

	Boys		Girls	
	Championship	Consolation	Championship	Consolation
10s Singles	G Stoupe	J Naylor	I Mclean	L Hibbert
Runner Up	M Harrison	S Kelly	G Masseurs	C Kelly
10s Doubles	J Dassanayake/M Harrison	S Benn/D Fuller	I Mclean/M Reid	G Masseurs/V Mcdouall
Runner Up	W Brownlie/G Stoupe	C Bramley/O Hall	A Lawson/A Smith	O Hartfield/ L Jansen
12s Singles	T Nelson	O Petersen	R Lawler	J Marett
Runner Up	F Humphries	N Allen	T Anderson	A Tapiata
12s Doubles	T Nelson/J Snowden-Poole	N Allen/S Russell	J Chuah/O McCormack	J Marett/M Wilson
Runner Up	A Liddell/ T Massam	H Hibbert/J Smith	A Coates/C Lee	J Jansen/B Mitchell
14s Singles	P Keerasuntonpong	A Cogger	L Beere	T Warmerdam
Runner Up	J Vogel	P Mitchell	P Anderson	L Chandler
14s Doubles	A Calder/J Chuah	A Cogger/T Titov-Smith	L Houston/O Wooldridge	S Calder/M Henderson
Runner Up	P Keerasuntonpong/T Petersen	S Chandler/W Hewett	P Anderson/G Hiri	A Coates/C Lee
16s Singles	D Miller	J McGregor	S Massam	O Wells
Runner Up	A Calder	T Titov-Smith	E Murchland	A Sandulescu
16s Doubles	P Keerasuntonpong/ D Miller	G McClelland/ T Mitchell	E Murchland/O Wells	A Lee/A Pavkovic
Runner Up	C Hudson/ H Humphries	D Bartlett/C Davey	J Andrew/S Massam	L Beere/C Van Boheemen

R/O = Rained off

N/C = Not Contested

HVT Players in bold

BOB BROWN ROSE BOWL – SUN 4TH DECEMBER 2011

The Bob Brown Rose Bowl rep match (between Wellington juniors and Hutt Valley juniors) is an annual match played at Mitchell Park each year in honour of the groundsman, who used to look after the grass courts at Mitchell Park and the adjacent rose gardens.

From the start the result never looked in doubt for Wellington who were keen to avenge their loss last year. Apart from the 16s age group it was a close competition, as the following would suggest:-

12s age group:	Wellington vs Hutt Valley	13 – 11
14s age group:	Wellington vs Hutt Valley	13 – 11
16s age group:	Wellington vs Hutt Valley	22 – 2
Final score:	Wellington vs Hutt Valley	48 – 24

All results and scores can be viewed on ConfigureRankings at the link below:

<http://www.tennis.org.nz/DisplayCompetition.asp?ID=1105>

NATIONAL JUNIOR TEAMS EVENTS 2012

A good number of Hutt Valley Players made up the Central teams

Boys 14s won Silver included Alex Calder and Felix Humphries

Boys 16s won Gold included Dominic Miller

Girls 12s won Gold included Jennifer Chuah

Girls 14s included Naea Albert and Lauren Beere

Girls 16s included Sara Massam

HVT - Champion of Champions

Men's Singles - Won by a junior – Michael McGlinchey

TRANS TASMAN TENNIS CENTRAL - Teams Event 28th – 29th April 2012

Wellington ended up defending their title for the fourth time at the 2012 Trans Tasman Tennis – Tennis Central Junior Team Championships which was held at the Renouf Tennis Centre. In this event each of the Tennis Central teams are split into two pools depending on the ConfigureRankings seeding and complete a pool round robin before playing off for their final positions on the Sunday afternoon. A combined Team was entered to make a total of 8 teams.

The event format is slightly different to most other fixtures that the region's players are involved in, in that each team, comprising of a core of 8 players across the 10 – 16 age group brackets, are required to play a Hopman Cup style format, which incorporates both Boys and Girls singles and mixed doubles.

This year the weather wasn't great and the first round and a half of the Pool Stage had to be played indoors with a format limited to 15 minutes per match. The weather then cleared up on the Saturday afternoon and the end of the second round could be played outdoors. While the Wellington Team was dominating the Pool A and assuring a spot in the final, the Pool B saw the Hutt Valley and the Combined Teams playing each other in the last pool round to secure a place in the final. Hutt Valley made it through beating the Combined Team by 9 to 3.

For the final position play-offs, Wellington won the overall title against Hutt Valley by 8 to 4.

Off the court and at the conclusion of play on the Saturday, many of the players, coaches, parents and supporters attended a pasta dinner in a relaxed and friendly atmosphere.

Final Placings

- | | |
|------------------|--------------|
| 1. Wellington | 5. Kapi Mana |
| 2. Hutt Valley | 6. Taranaki |
| 3. Combined Team | 7. Wairarapa |
| 4. Manawatu | 8. Wanganui |

HVT JUNIOR SUCCESSES DURING 2011 / 2012

Alex Calder (HV) represented NZ in the ITF World Junior Teams Event for Asia/Oceania held in Malaysia along with Ajeet Rai (Taranaki) and Rawhiti Williams (Akld). The NZ Team finished a credible 12th from 16 Teams and NZ automatically qualify for next year's Asia/Oceania Teams Event

2012 Tennis Central Masters – Dominic Miller (Boys 16s), Sara Massam (Girls 16s), Felix Humphries (Boys 14s), Naea Albert & Lauren Beere (Girls 14s) and Jennifer Chuah (Girls 12s)

Lucas Miller has an ITF Junior ranking of 1248=

Dominic Miller was in the winning Central Regional Interclub Team

Peter Calder - HVT Junior Convenor & Joe Glover

COMPLEX MAINTENANCE REPORT

COMPLETED PROJECTS:

There have been several very visible and large-scale improvements in the past year. These include the renewal of the fencing around courts 1-4, the painting of the interior of the complex and the recoating of the floor in the upstairs lounge. The chairs in the lounge have also been transformed by their new covers. The wood in the lounge looks much better after sanding and a fresh cover of polyurethane. However, part of the new finish was damaged by steam from the sauna beneath. This has now been corrected, but once the floor is fully dried out some of the surface will need to be redone.

ACTION	WORK DONE BY	COST	DATE	TENNIS/SQUASH
Inside of complex painted	Hutt City Decorators	15542.25	October 2011	50/50
Painting toilets upstairs, downstairs hallway & foyer	Hutt City Decorators	7469.25	December 2011	40/60
Floor sanding of lounge	Wiki Henry	4657.50	January 2012	40/60
Lounge chairs recovered	Christine Barnett	750.00	February 2012	40/60

The expenditure on the complex itself has been shared between Squash and Tennis.

WORK IN PROGRESS:

The major project under way is progression towards the replacement of the surface on Courts 1 & 2. Courts 3 & 4 will also need a new surface, but this will probably be in another stage, as an inspection by the contractors who originally laid them, Tiger Turf, suggests that they have at least three years more life in them.

Discussions with potential contractors have been focused on what will be the best solution for a premier result, one which will also resolve some of the drainage problems experienced by Courts 1 & 2. It is possible that this will require a concrete base for the courts, which will be resurfaced with artificial turf. Such a major initiative means that care is being taken to get the specifications right before HVT seeks tenders for the job and assistance with funding.

The first step in this project has been the renewal of the netting around Courts 1-4 and the painting of the posts, in order to complete these in the same format as the work already done on Courts 5-13.

The total cost so far is \$12949.08 (excluding GST) . This has been assessed as spending on repairs and maintenance, which explains the major part of the increase in this item for 2011-2012.

Particular thanks are due to Les Stewart, who organised the removal of the trees along the east side of Court 1. Stam Contractors made a major job more manageable by contributing voluntary help to remove tree roots and truck the debris away. This had to be completed before the renewal of the netting and will reduce the amount of material dropping on the courts. Barrie Shute was also very helpful in overseeing repairs to the existing drains on the front four courts. These were no longer functioning and now, like the other court drains, can be accessed from new sumps when sand needs to be cleared from them.

ACTION	WORK DONE BY	COST	DATE COMPLETED
Fencing renewal for courts 1-4	Bachlerdeck	9900.00	Jan 2012
Trees cleared on east side of Court 1, soil removed & garden grassed	Voluntary work HVT committee, plus help from Stam Contractors	154.70	Jan 2012
Drainage: 3 new jetting points at pavilion end and 2 new sumps established at south end of courts 1&2 and 3&4	Perkinson Civil	2480.00	February 2012
Drains cleared of sand	H2O Contractors	414.38	March 2012 (other drains also cleared at same time for additional \$446.25)
Excess sand cleared from above drains Courts 1-4	HVT		April, 2012

Preliminary evaluation of surfacing options and court levels established	Three potential contractors		July 2012
COSTS TO DATE		12949.08	
FUTURE STEPS		EST	PROJECT TIMETABLE
Specifications set and tenders called for Courts 1-2. Assumed new base required		82,000.00	Depends on grant application deadlines and potential council support whether project for early or late 2013
Quotations for possible ancillary work – new posts, drainage, perimeter sealing, trenching and cabling for lights on Court 1.		20,000.00	Timetable as above
Grant applications prepared			As above
Work begins			2013



NE end of Court 1, showing area under stairs to be sealed. Water flows from the gate area on to the courts.



East side of court 1. Development would involve trenching to install conduits under the new court surface for lights. The area where trees have been removed is in the top of the photo, along with new netting and refurbished posts.

MAINTENANCE ISSUES

Grounds maintenance continues to be carried out by Dave Falconer from Green Acres. This year Courts 1-4 were once again moss-sprayed by Wellington Weedspraying and for the first time it has also been necessary to spot spray moss on parts of Courts 5-13. As moss gets time to be established on these newer courts, it will be necessary for them to be treated annually and this will be an expense to be budgeted for.

The courts were groomed by Bachlerdeck in April. More frequent grooming will also be necessary to preserve the quality of the courts and ways of doing this economically need investigation. At a quote of \$250 per court from one contractor, it can be seen that this is potentially a substantial expense.

New nets were installed on Courts 1-3.

There have been a number of comments about uneven bounce on Courts 5-13. It will be helpful if players can inform the Complex Manager, Andrew Chuah, if they note particular spots that are of issue, as he is keeping a record of them. The HVT committee is aware that such bounces sometimes occur, as the base is less than ideal. To have replaced it with asphalt or concrete at the time of renewal would have at least doubled the cost. In the case of the courts next to the pavilion, however, the need for renewal is less urgent, which is allowing time to build up the funds to do a premier job.

Finally, HVT have acquired a set of scoreboard s for the courts and these will be installed for the coming season ,together with clearly visible court numbers.

John Horrocks

FINANCIAL STATEMENTS

HUTT VALLEY TENNIS INCORPORATED

FINANCIAL STATEMENTS

FOR THE 12 MONTH PERIOD ENDED 30 APRIL 2012

HUTT VALLEY TENNIS INCORPORATED
STATEMENT OF FINANCIAL PERFORMANCE
FOR THE 12 MONTH PERIOD ENDED 30 APRIL 2012

	NOTE	12 Months Ended 30 April 2012 \$	12 Months Ended 30 April 2011 \$
INCOME			
Membership Income			
Fees	1	74,102	86,025
Activity Income			
Bar	2	47,531	37,855
Pro Shop	2	50,812	37,618
Court Rentals		17,363	19,696
Competition Income	3	31,194	44,714
Other Income			
Sponsorship		5,877	5,498
Grants	4	25,519	11,319
Interest Income		18,393	18,787
Sundry Income		672	1,440
TOTAL INCOME		271,462	262,950
Facility Operating Expenses			
Cleaning		20,709	18,049
Depreciation		48,333	46,965
Insurance		20,297	11,979
Management		66,205	63,575
Rent		1,685	1,685
Repairs & Maintenance		62,967	38,681
Sundry Operating costs		4,936	5,972
Utilities TV & Telephone		26,019	27,990
Total Facility Operating Expenses		251,151	214,896
Recharges		-	-
Net Facility Operating Expenses		251,151	214,896
Administration Costs			
Audit fee		6,300	6,833
Bank Charges		1,474	709
General expenses		5,339	5,110
Juniors		14,989	9,003
Printing & Stationery		731	1,610
Sundry Administrative costs		1,120	1,307
Total Administration Expenses		29,952	24,572
TOTAL EXPENSES		281,103	239,468
NET SURPLUS / (DEFICIT)		-9,641	23,482



The attached "Notes to Financial Statements" form part of and are to be read in conjunction with these financial statements.

Page 2

HUTT VALLEY TENNIS INCORPORATED
STATEMENT OF MOVEMENTS IN EQUITY
FOR THE 12 MONTH PERIOD ENDED 30 APRIL 2012

	NOTE	Tennis \$	Squash \$	12 Months Ended 30 April 2012 \$	12 Months Ended 30 April 2011 \$
EQUITY					
Retained Earnings					
Retained Earnings - Opening Balance		524,458	89,430	613,888	709,535
Introduction of Mitchell Park Squash Club Reserves 1/4/10	4a	(32,692)	32,692	-	171,682
Net Surplus for the Year		(9,002)	(640)	(9,642)	23,482
Transfers (to) / from Development Reserve	5	(25,541)	-	(25,541)	(229,273)
Transfers (to) / from Replacement Reserve	6	(28,379)	-	(28,379)	(61,538)
Retained Earnings - Closing Balance		428,844	121,482	550,326	613,889
Development Reserve					
Development Reserve - Opening Balance		129,273	100,000	229,273	-
Transfers (to) / from Retained Earnings		25,541	-	25,541	229,273
Development Reserve - Closing Balance		154,814	100,000	254,814	229,273
Replacement Reserve					
Replacement Reserve - Opening Balance		61,538	-	61,538	-
Transfers (to) / from Retained Earnings		28,379	-	28,379	61,538
Replacement Reserve - Closing Balance		89,917	-	89,917	61,538
TOTAL EQUITY		673,575	221,482	895,057	904,699

The attached "Notes to Financial Statements" form part of and are to be read in conjunction with these financial statements.

Page 3



HUTT VALLEY TENNIS INCORPORATED
STATEMENT OF FINANCIAL POSITION
AS AT 30 APRIL 2012

	NOTE	Tennis \$	Squash \$	As At 30 April 2012 \$	As At 30 April 2011 \$
Current Assets					
Cash on Hand		350	1,280	1,630	1,153
Bank Accounts	9	441,616	183,530	625,146	607,540
Debtors		7,184	2,694	9,878	26,598
GST Refund Due		-	-	-	0
Stock (Pro Shop & Bar)	2	38,864	4,936	43,800	37,134
Investments	7	3,074	-	3,074	2,981
Total Current Assets		491,089	192,439	683,528	675,405
Non-current Assets					
Fixed Assets	8	251,742	37,808	289,550	316,972
Total Non-current Assets		251,742	37,808	289,550	316,972
TOTAL ASSETS		742,831	230,248	973,078	992,377
Current Liabilities					
Creditors		25,859	15,334	41,193	41,231
Payable to Mitchell Park Squash Club		41,893	(41,893)	-	0
GST Payable		1,504	(1,232)	272	29
Grants Received in Advance	4	-	4,934	4,934	13,076
Subscriptions Received in Advance		-	31,623	31,623	33,342
Total Current Liabilities		69,255	8,766	78,022	87,678
NET ASSETS		673,575	221,482	895,057	904,699
Represented By:					
Equity					
Retained Earnings		428,844	121,482	550,326	613,889
Development Reserve	5	154,814	100,000	254,814	229,273
Replacement Reserve	6	89,917	-	89,917	61,538
TOTAL EQUITY		673,575	221,482	895,057	904,699

For and on behalf of the Committee:

Treasurer

Chair

Date

Date



The attached "Notes to Financial Statements" form part of and are to be read in conjunction with these financial statements.

Page 4

**HUTT VALLEY TENNIS INCORPORATED
STATEMENT OF ACCOUNTING POLICIES
FOR THE 12 MONTH PERIOD ENDED 30 APRIL 2012**

Reporting Entity

These are the consolidated financial statements of Hutt Valley Tennis Incorporated ('HVT'). HVT is an Incorporated Society registered under the Incorporated Societies Act 1908.

HVT structures its business activities under three independent business units. The first is the tennis club which provides membership to Member Clubs in the Hutt Valley region, Life Members and the Mitchell Park Squash Club, as described in the Constitution of HVT. The second business unit is the Complex which relates to the building and facilities occupied by HVT. The third business unit is the Mitchell Park Squash Club (the 'Club') which operates as a separate sub-committee of HVT and up to 2011 had previously prepared its own special purpose financial statements.

Consolidated financial statements have been prepared for the year ending 30 April 2012.

The financial statements have been prepared in accordance with generally accepted accounting principles.

HVT qualifies for differential reporting as it is not publicly accountable and is not large as defined in the Framework for Differential Reporting issued by the New Zealand Institute of Chartered Accountants. HVT has taken advantage of all available differential reporting exemptions.

Measurement Base

The HVT uses historical cost basis for the measurement and reporting of its results and financial position, except for investments, which are measured at net market value.

Specific Accounting Policies

The following specific accounting policies that materially affect the measurement of financial performance and financial position have been applied:

- (a) **Grants Revenue** - is included in operating revenue when earned. If particular conditions are attached to a grant that would require it to be repaid if these conditions were not met, then the income received is recorded as a liability under Income Received in Advance to the extent of the conditions not yet met as at the year end.
- (b) **Fixed Assets** - are recorded at cost less accumulated depreciation.

Fixed assets are depreciated over their economic useful life using the following straight line depreciation rates:

Tennis	
Courts	10 years
Court Lights	10 years
Office Equipment	5 years
Heat Pump	5 years
String Machine	5 years
Pavilion	20 years
Furniture and Fittings	5 years
Seating Petanque Piste	5 years
Squash	
Fixtures & Fittings	\$5,000 p.a.
Ventilation	10 years
Equipment	5 years

- (c) **Stock** - has been valued at the lower of cost or net realisable value. Cost is determined using the first-in, first out (FIFO) method.
- (e) **Investments** - shares held in listed companies are recorded at net market value as at the reporting date. The Net Market Value is calculated using the closing share price as published by the New Zealand Stock Exchange. The resulting increase or decrease in value of shares held is recognised in the Statement of Financial Performance as unrealised gain or loss on investments.



HUTT VALLEY TENNIS INCORPORATED
NOTES TO THE FINANCIAL STATEMENTS
FOR THE 12 MONTH PERIOD ENDED 30 APRIL 2012

- (f) **Goods and Services Tax (GST)** - the Statement of Financial Performance has been prepared so that all components of revenue and expenses are stated exclusive of GST. All items in the Statement of Financial Position are stated net of GST with the exception of Debtors and Creditors, which include GST where invoiced.
- (g) **Income Tax** - HVT is approved as an amateur sports promoter and is therefore exempt from Income Tax under Section CW46 of the Income Tax Act 2007.
- (h) **Comparative Figures** - Comparative figures are for the 12 months ended 30th April 2011.
- (i) **Changes in accounting policies**
There have been no changes in accounting policies during the year. All policies have been applied on a consistent basis with those used in previous years.

1 MEMBERSHIP INCOME

	Tennis	Squash	12 Months Ended 30 April 2012	12 Months Ended 30 April 2011
	\$	\$	\$	\$
Affiliation Fees charged to Clubs and Members	33,818	47,989	81,807	94,574
Development Levy Charged	19,785	-	19,785	20,988
Affiliation Fees paid to NZT/NZS	(16,848)	(10,642)	(27,490)	(29,538)
Net Fee Income	36,755	37,347	74,102	86,025

2 PRO SHOP & BAR TRADING ACCOUNT

	Tennis	Squash	12 Months Ended 30 April 2012	12 Months Ended 30 April 2011
	\$	\$	\$	\$
Sales	124,253	106,606	230,858	214,904
Total Income	124,253	106,606	230,858	214,904
Less: Cost of Sales				
Opening Stock	34,211	2,922	37,133	43,115
Purchases	78,094	61,088	139,182	133,450
Closing Stock	(38,864)	(4,936)	(43,800)	(37,133)
Total Cost of Sales	73,441	59,074	132,515	139,432
Net Surplus	50,812	47,531	98,343	75,473

3 COMPETITION INCOME

	Tennis	Squash	12 Months Ended 30 April 2012	12 Months Ended 30 April 2011
	\$	\$	\$	\$
Business House fees / squash tournaments	14,427	(189)	14,238	16,227
Interclub fees	14,341	(150)	14,190	14,698
Junior Competitions	11,953	-	11,953	16,574
Gross Competition Income	40,720	(339)	40,381	47,499
Less Regional Levies & Competition costs	(3,276)	(5,911)	(9,187)	(2,786)
Net Competition Income	37,444	(6,250)	31,194	44,714



HUTT VALLEY TENNIS INCORPORATED
NOTES TO THE FINANCIAL STATEMENTS
FOR THE 12 MONTH PERIOD ENDED 30 APRIL 2012

4 GRANTS INCOME

As At 30 April 2012

Funder	Purpose	Opening Income Received in Advance \$	Grant Received \$	Grant Spent /Earned \$	Closing Income Received in Advance \$
Pub Charity	Squash Juniors	9,576	3,572	9,714	3,434
NZCT	Adv Juniors	2,500		2,500	-
Team - Endeavour CT	Representative teams	1,000		1,000	-
Pelorus Trust	Representative teams		1,000	1,000	-
Bank of New Zealand	Tournaments		1,305	1,305	-
Hutt Mana Charitable Trust	Mid week ladies		1,500		1,500
NZCT	Court Handrails		5,000	5,000	-
Pub Charity	Court Lights		5,000	5,000	-
		13,076	17,377	25,519	4,934

As At 30 April 2011

Funder	Purpose	Opening Income Received in Advance \$	Grant Received \$	Grant Spent /Earned \$	Closing Income Received in Advance \$
Pub Charity	Squash Juniors	-	15,895	6,319	9,576
NZCT	Adv Juniors	-	2,500	-	2,500
Pub Charity	Court Lights	-	5,000	5,000	-
Team - Endeavour CT	Courts Upgrade	-	1,000	-	1,000
		-	24,395	11,319	13,076

4a MPS balance with HVT

The balance due to MPS for the years 2000 to 2005 was understated by the amount of the HCC loan a total of \$32,692. A significant file supports this work and the historic correction has been made between the MPS and Tennis Reserves.

5 Development Reserve

The transfer to the development reserve comprises:-

Tennis Accumulated development levies charged but not yet spent. \$ 154,814 of which \$ 19,785 relates to levies charged for the year ended 30th April 2012, \$3,966 & \$1,790 is interest credited in 2012 & 2011 respectively.

Squash Reserves allocated for future development.(\$100,000).

6 Replacement Reserve

Tennis The replacement reserve has been created in 2011 and comprises depreciation on the courts since the development in 2010.

	\$
Balance at 30 April 2011	61,538
Depreciation on courts 2012	27,180
Interest earned on Replacement reserve bank account	1,199
Total	89,917

7 INVESTMENTS

	As At 30 April 2012	As At 30 April 2011
Shares - Vector Limited	\$ 3,074	\$ 2,981

HVT received the shares from a distribution made by Natural Gas Corporation (now Vector Limited) at no cost to consumers. The shares comprise 1,169 ordinary shares valued at the closing market price as at 30 April 2012



HUTT VALLEY TENNIS INCORPORATED
NOTES TO THE FINANCIAL STATEMENTS
FOR THE 12 MONTH PERIOD ENDED 30 APRIL 2011

8 FIXED ASSETS

As At 30 April 2012				
	Cost	Depreciation	Accumulated Depreciation	Net Book Value
	\$	\$	\$	\$
Tennis				
Courts	364,106	27,180	162,523	201,583
Court Lights	75,871	7,588	71,494	4,377
Office Equipment	4,400	140	4,191	209
Heat Pump	2,666	534	2,402	264
String Machine	7,250	1,000	4,917	2,333
Total	454,293	36,442	245,527	208,766
Complex				
Pavilion	223,428	2,455	180,452	42,976
Furniture and Fittings	5,726	-	5,726	-
Office Equipment	15,580	-	15,580	-
Seating Petanque Piste	3,357	-	3,357	-
Total	248,091	2,455	205,115	42,976
Squash				
Fixtures & Fittings	72,912	4,966	72,912	-
Ventilation, Lights & Safety Glass	40,811	2,752	4,877	35,934
Equipment	8,844	1,718	6,970	1,874
Total	122,567	9,436	84,759	37,808
Total Fixed Assets	824,951	48,333	535,401	289,550

As At 30 April 2011				
	Cost	Depreciation	Accumulated Depreciation	Net Book Value
	\$	\$	\$	\$
Tennis				
Courts	364,106	27,180	135,343	228,763
Court Lights	75,871	7,588	63,906	11,965
Office Equipment	4,400	140	4,051	349
Heat Pump	2,666	534	1,868	798
String Machine	7,250	1,000	3,917	3,333
Total	454,293	36,442	209,085	245,208
Complex				
Pavilion	223,428	2,455	177,997	45,431
Office Equipment	5,726	-	5,726	-
Furniture and Fittings	15,580	-	15,580	-
Seating Petanque Piste	3,357	-	3,357	-
Total	248,091	2,455	202,660	45,431
Squash				
Fixtures & Fittings	72,912	5,000	67,946	4,966
Ventilation	20,056	1,381	2,125	17,931
Equipment	8,688	1,687	5,252	3,436
Total	101,656	8,068	75,323	26,333
Total Fixed Assets	804,040	46,965	487,068	316,972

The land occupied by HVT is owned by the Hutt City Council. The 2008 Government Valuation of the capital improvements was \$1,925,000. At 12 May 2011 the Insurance valuations were; depreciated replacement cost \$1,280,000, functional replacement cost \$3,204,000



HUTT VALLEY TENNIS INCORPORATED
NOTES TO THE FINANCIAL STATEMENTS
FOR THE 12 MONTH PERIOD ENDED 30 APRIL 2012

9 BANK ACCOUNTS

	Tennis	Squash	As At 30 April 2012	As At 30 April 2011
	\$	\$		
Current Account	13,822	37,800	51,622	58,904
Executive Account	14,812	-	14,812	18,357
Call Account - Development Reserve	154,814	100,000	254,814	231,063
Call Account Court replacement Reserve	89,917		89,917	
Call Accounts - Other	168,251	45,730	213,981	299,216
	441,616	183,530	625,146	607,540

	Tennis	Squash	As At 30 April 2011
	\$	\$	
Current Account	14,906	43,998	58,904
Executive Account	18,357	-	18,357
Call Account - Development Reserve	131,063	100,000	231,063
Call Accounts - Other	243,890	55,326	299,216
	408,216	199,324	607,540

10 CONTINGENT LIABILITIES

HVT has provided a guarantee to MPS should MPS be unable to meet its obligations.

11 COMMITMENTS

HVT had the following operating lease commitments as at the reporting date.

Hutt City Council - Ground Lease

	12 Months ended 30 April 2012	12 Months ended 30 April 2011
	\$	\$
Current	1,685	1,685
Non-Current	6,739	8,425
Total	8,424	10,110



HUTT VALLEY TENNIS INCORPORATED
SCHEDULE OF INCOME AND EXPENSES
FOR THE 12 MONTH PERIOD ENDED 30 APRIL 2012

SQUASH

	NOTE	12 Months Ended 30 April 2012 \$	12 Months Ended 30 April 2011 \$
INCOME			
Squash Income			
Bar			
Bar Sales		105,206	91,310
Bar Purchases		55,503	52,052
Gross Profit		<u>49,703</u>	<u>39,257</u>
Handle Club Revenue		1,400	1,207
Bar Costs		3,571	2,609
Bar Trading Surplus	2	<u>47,531</u>	<u>37,855</u>
Other Income			
Subscriptions	1	47,989	57,462
Court Hire		2,465	4,030
Tournament & Inhouse Comp net surplus/(deficit)		(189)	994
Interclub net surplus/ (deficit)		(150)	919
Grants	4	25,519	11,319
Sponsorship		2,337	2,998
Other Income		303	104
Interest Income		7,149	7,389
Total Other Income		<u>85,422</u>	<u>85,215</u>
Total Squash Income		<u>132,954</u>	<u>123,070</u>
EXPENSES			
Squash Expenditure			
Administration		474	722
Advertising & Promotion		525	464
Affiliation Fees	1	10,642	12,262
Audit Fees		2,100	2,000
Depreciation	8	9,436	8,068
Exec Committee Levies - complex costs		68,390	63,751
General Expenses		6,159	5,110
Function Net Costs		113	411
Junior Costs (funded by grants and fundraising)		12,914	6,787
Repairs & Maintenance		13,362	1,403
Rep Team Costs (funded by grants and fundraising)		5,911	889
Television Costs		3,568	3,456
Total Squash Expenditure		<u>133,594</u>	<u>105,322</u>
NET SURPLUS / (DEFICIT)		<u>(640)</u>	<u>17,748</u>



HUTT VALLEY TENNIS INCORPORATED
SCHEDULE OF INCOME AND EXPENSES
FOR THE 12 MONTH PERIOD ENDED 30 APRIL 2012

TENNIS

	NOTE	12 Months Ended 30 April 2012 \$	12 Months Ended 30 April 2011 \$
INCOME			
Tennis Income			
Affiliation Fees	1	33,818	37,112
Development Levy	1	19,785	20,988
Interclub Fees	3	14,341	13,779
Sponsorship		3,540	2,500
Tournaments		-	-
Dividends		158	159
Interest		9,024	9,192
Juniors		11,953	16,574
Unrealised Gain/Loss on Investments		94	468
Dine out Books & other sundry income		117	708
Total Tennis Income		92,828	101,479
EXPENSES			
Tennis Expenditure			
Advertising		-	-
Affiliation - NZT		16,848	17,276
Audit		4,200	4,833
Bank Charges		494	528
Depreciation	8	36,442	36,442
Dine out Books		-	-
Honours Board		-	-
Interclub Book/Reports		320	325
Juniors		2,075	2,217
MYOB/Xero		539	-
Printing & Stationery		731	1,285
Regional Levies		1,426	1,620
Repairs and Maintenance		18,494	7,799
Representative Team		-	-
Sundry Expenses (TP, Website, PO box, Logo)		503	229
Tournaments		-	174
Trophies Prizes and Functions		1,850	103
Bonus		6,205	3,575
Total Tennis Expenditure		90,127	76,405
NET SURPLUS		2,702	25,074



HUTT VALLEY TENNIS INCORPORATED
SCHEDULE OF INCOME AND EXPENSES
FOR THE 12 MONTH PERIOD ENDED 30 APRIL 2012

COMPLEX

	NOTE	12 Months Ended 30 April 2012	12 Months Ended 30 April 2011
INCOME			
Complex Income			
Business House	3	14,427	15,234
Court Rentals		14,897	15,666
Interest Income		2,220	2,206
Pro Shop Sales	2	50,812	37,618
Squash Apportionment		68,390	63,751
Total Complex Income		150,746	134,475
EXPENSES			
Complex Expenditure			
Bank Charges		160	181
Cleaning		20,709	18,049
Depreciation	8	2,455	2,455
Electricity/Gas		18,919	20,743
General Expenses		330	230
Insurance		20,297	11,979
Management Contract		60,000	60,000
Photocopier		542	587
Rent - Hutt City Council		1,685	1,685
Repairs & Maintenance		31,111	29,479
Rubbish Removal		1,943	1,854
Sponsors Board and function		-	1,893
Security		766	889
Telephone		3,533	3,791
Total Complex Expenditure		162,449	153,815
NET (DEFICIT)/SURPLUS COMPLEX		(11,703)	(19,340)
NET (DEFICIT)/SURPLUS TENNIS		2,702	25,074
TOTAL (DEFICIT)/SURPLUS (before Squash and grants)		(9,002)	5,734
SQUASH (DEFICIT)/SURPLUS	-	640	17,748
GRANTS INCOME		-	-
TOTAL (DEFICIT)/SURPLUS		(9,642)	23,482



INDEPENDENT AUDITOR'S REPORT

To the Members of Hutt Valley Tennis Incorporated

We have audited the consolidated financial statements of Hutt Valley Tennis Incorporated (including Mitchell Park Squash Club), on pages 2 to 12, which comprise the statement of financial position as at 30 April 2012, the statement of financial performance and statement of movements in equity for the year then ended, and a summary of significant accounting policies and other explanatory information.

Hutt Valley Tennis Committee's Responsibility for the Financial Statements

Hutt Valley Tennis Committee is responsible for the preparation and fair presentation of the consolidated financial statements in accordance with generally accepted accounting practice in New Zealand and for such internal control as the Hutt Valley Tennis Committee determine is necessary to enable the preparation of consolidated financial statements that are free from material misstatement, whether due to fraud or error.

Auditor's Responsibility

Our responsibility is to express an opinion on the consolidated financial statements based on our audit. We conducted our audit in accordance with International Standards on Auditing (New Zealand). Those standards require that we comply with ethical requirements and plan and perform the audit to obtain reasonable assurance about whether the consolidated financial statements are free from material misstatement.

An audit involves performing procedures to obtain audit evidence about the amounts and disclosures in the consolidated financial statements. The procedures selected depend on the auditor's judgement, including the assessment of the risks of material misstatement of the consolidated financial statements, whether due to fraud or error. In making those risk assessments, the auditor considers internal control relevant to the entity's preparation and fair presentation of the consolidated financial statements in order to design audit procedures that are appropriate in the circumstances, but not for the purpose of expressing an opinion on the effectiveness of the entity's internal control. An audit also includes evaluating the appropriateness of accounting policies used and the reasonableness of accounting estimates, as well as evaluating the overall presentation of the consolidated financial statements.

We believe that the audit evidence we have obtained is sufficient and appropriate to provide a basis for our audit opinion.

Other than our capacity as auditor we have no relationship with, or interests in, Hutt Valley Tennis Incorporated.

Basis for Qualified Opinion on the Consolidated Financial Position and the Consolidated Financial Performance

In common with similar organisations, control over cash income prior to being recorded is limited and there are no practical audit procedures to determine the effect of this limited control. Included in Hutt Valley Tennis Incorporated's recorded income is cash income from Pro Shop Sales of \$124,253 and Bar Sales of \$106,606. There is no system of control over such income on which we could rely for the purpose of our audit and there were no satisfactory audit procedures that we could adopt to confirm independently that all cash income was properly recorded.

Qualified Opinion on the Consolidated Financial Position and the Consolidated Financial Performance

In our opinion, except for the effects of the matter described in the Basis for Qualified Opinion paragraph, the consolidated financial statements on pages 2 to 12 present fairly, in all material respects, the consolidated financial position of Hutt Valley Tennis Incorporated as at 30 April 2012 and its consolidated financial performance for the year then ended in accordance with generally accepted accounting practice in New Zealand.



Markhams Miller Dean Audit | Chartered Accountants | Wellington, New Zealand
20 July 2012

FACILITY OPERATING ACCOUNT – SQUASH APPORTIONMENT 12 months to 30.4.2012

	ACTUAL APRIL TO DATE	% RATE	SQUASH SHARE	BUDGET TOTAL 2012	%	SQUASH BUDGET 2012	%	TENNIS BUDGET 2012
AGREED CONTRACT	60,000	20	12,000.00	60,000	20	12,000	80	48,000
ADVERTISING	0	50		0	50	0	50	0
BANK FEES	180	50	80.00	300	50	150	50	150
CLEANING	15,052	70	10,536.40	14,000	70	9,800	50	4,200
CLEANING MATERIALS	5,657	70	3,959.90	6,000	70	4,200	30	1,800
DEPRECIATION						0		0
ELECTRICITY	16,585	60	9,951.00	17,000	60	10,200	40	6,800
GAS	2,333	70		3,600	70	2,520	30	1,080
GENERAL DUTY FEES	330	50	165.00	500	50	250	50	250
INSURANCE	20,207	50	10,148.50	20,500	50	10,250	50	10,250
LEGAL FEES	0	50		0		0		0
PHOTOCOPIER	542	50	271.00	1,000	50	500	50	500
PRINTING & STATIONERY	0	50		0		0		0
RENT INC	1,685	50	842.50	2,000	50	1,000	50	1,000
REPAIRS & MAINTENANCE	17,505	60	10,503.00	5,000	60	3,000	40	2,000
REPAIRS & MAINTENANCE-2000	13,515	50	6,757.50	10,000	50	5,000	50	5,000
RUBBER REMOVAL	1,045	50	522.50	2,000	50	1,000	50	1,000
SECURITY	766	50	383.00	1,000	50	500	50	500
TELEPHONE	0	50	0.00	0	50	0	50	0
	3,533	50	1,766.50	4,000	50	2,000	50	2,000
Total complex costs per Schedule	159,903		68,388.80	146,900		62,370		84,530
Total complex costs per Schedule	159,903		68,388.80					
Add Depreciation	2,455							
Total per accounts	162,358							

RECEIVED FROM SQUASH

62,376.00

NETT (UNDER)OVER PAYMENT

-6,013.80

Statement of movements on MFS Current accounts

MFS Balance	total	Current account	subs creditors	Credit card debtor
Balance b/f at 1st May 2011	17,581.35	11,851.35	5730	
under payment	-6,013.80	-6,013.80		
subs creditors paid May 2011	-5,730.00		-5730	
subs creditors at 30 April 2012				
Credit card charges	-897.00			-897
subs creditor at 30 April 2012 (paid in May)	4,260.00		4260	
Adjustment re 2000-2005 (account note 4a)	32,892.00	32,892.00		
Balance c/f at 30/4/2012	41,892.55	38,529.55	4260	-897

note 1 The undercharge of the gas apportionment will be adjusted during 2012/13

Adjusted budgets

BUDGET SCHEDULE OF INCOME AND EXPENSES – TENNIS – F.Y.E. 30/4/2013

(Excludes MPS budget)

Budget 2012/13	Budget 12/13	Actual 11/12	Budget 11/12
Tennis Income			
Affiliation Fees (Excl.Dev.Levy)	33,000	33,818	37,000
Interclub Fees	14,000	14,341	16,000
Sponsorship	5,000	3,540	5,000
Tournaments	0	0	0
Dividends	0	158	0
Interest	7,000	9,024	5,000
Juniors	12,000	11,953	14,000
Sundry	0	211	0
Total Tennis Income	71,000	73,045	77,000
Tennis Expenditure			
Advertisements	0	0	0
Affiliation N.Z.T.	16,500	16,848	17,000
Audit	4,500	4,200	4,000
Bank Fees	500	494	600
Books & Reports	500	320	500
Juniors	2,000	2,075	2,000
Printing & Stationery	1,000	731	1,500
Regional Levies	1,500	1,426	1,700
Repairs & Maintenance	10,000	18,494	10,000
Rep. Teams	0	0	0
Sundry	500	503	0
Trophies	300	0	300
Honours Board	100	1,850	2,000
Bonus	7,000	6,205	4,500
Xero	600	539	
	45,000	53,685	44,100
Total Tennis Surplus/Deficit	26,000	19,360	32,900

BUDGET SCHEDULE OF INCOME AND EXPENSES – EXECUTIVE – F.Y.E. 30/4/2013

Budget 2012/13		Budget 12/13	Actual 11/12	Budget 11/12
Complex Income				
Business House		15,000	14,427	16,000
Court Rental		16,000	14,897	16,000
Pro Shop		50,000	50,812	40,000
Squash Portion		62,600	68,390	62,370
Interest Received		2,100	2,220	1,000
Total Complex Income		145,700	150,746	135,370
Complex Expenditure				
Advertising		0	0	0
Bank Fees		200	160	300
Cleaning		16,500	15,052	14,000
Cleaning Materials		6,000	5,657	6,000
Electricity/Gas		16,500	18,918	20,600
Gas		3,000		
General		500	330	500
Insurance		23,000	20,297	20,500
Legal Fees		0	0	0
Management Contract		60,000	60,000	60,000
Photocopying		1,000	542	1,000
Rent H.C.C.		2,000	1,685	2,000
Repairs & Maintenance		10,000	31,111	15,000
Rubbish		2,000	1,943	2,000
Security		1,000	766	1,000
Telephone/Tolls		4,000	3,533	4,000
Total Complex Expenditure		145,700	159,994	146,900
Complex Surplus/Deficit (before depreciation)		-	(9,248)	(11,530)
Total Surplus / Deficit	Tennis Complex	26,000	19,360	32,900
		-	(9,248)	(11,530)
		26,000	10,112	21,370
Court Depreciation		36,442	36,442	36,442

MINUTES OF PREVIOUS AGM

HUTT VALLEY TENNIS INC

10 Mitchell Street, PO Box 45017, WATERLOO, LOWER HUTT 5042.

Phone (04) 567 6912 Fax (04) 567 2988 E-mail: huttvalleytennis@xtra.co.nz

66TH ANNUAL GENERAL MEETING

Held on Monday the 29th of August 2011 in the upstairs lounge at the Mitchell Park Complex, 10 Mitchell Street

At 7.40pm The Hutt Valley Tennis Inc. 66th Annual General Meeting was officially opened by the President, Wayne Dahlberg, welcoming all the delegates and those others in attendance, including David Bassett from Hutt City Council .

APOLOGIES:

Mike Kibblewhite, Susan Cook, Glenys Clark, Warwick Wyatt, Joan Wells, Les Stewart, Jackie Clark, Charlie Cordwell

ROLL CALL OF DELEGATES.

Life Members: Warwick Stoupe, Barry Shute, Paddy Wells, Gary Nelson.

Avalon: Barry Bishop, Rick Stapa, John Bielby, Richard Massam, Brenda Hood, Jimmy Canning.

Epuni: none

Lower Hutt: Trevor Dine, , Peter Calder, Dick Werry, John Donaghy.

Maungaraki: Joe Glover

Muritai: Kim Everett, Bruce Connolly, Margaret Connolly, Ian Miller, John Horrocks

Petone: Peter Feakin, Judith Feakin, Cilla Heymer, Chris Bazalo

Pinehaven: Barry Yandle,

Stokes Valley: Dave Wilkinson, Jo Laing, Val Singer

Upper Hutt: Dale Ritossa, Mike Quinn

Wainuiomata: Dillon Walker, Paul Jeffs

Squash: Paul Barnett, Tony Gambitsis.

Also in attendance were: Trustees – David Bassett,

Complex Manager : Andrew Chuah

Brendon Smith, Mike Ryan – Tennis Central

The minutes of the previous Annual General Meeting held 30th August 2010 were presented and accepted. Moved Barry Yandle/ Seconded John Donaghy. Carried. – noted that Attendance should have read Warwick Stoupe

MATTERS ARISING: Nil.

TRUSTEE

David Bassett acknowledged the work that has been done to upgrade complex with special mention of Ian Miller's contribution. The history of the role of trustees is to maintain the land for the council and maintain good relations between squash and tennis. The upgrade is strongly supported by the mayor and needs to be finished off and are keen to resolve the dispute between tennis and squash over funds split in the executive account.

ANNUAL REPORTS:

- The annual reports were presented and accepted without comment;
- Fencing for front courts and resurfacing courts 1 & 2 required. There is \$100k in the development fund that has been set aside for this project. There is a possibility of reducing the development levy once this work has been completed
- Interior of complex is going to be repainted
- Social side needs to be pushed more and facilities used more for this
- Ian is resigning position of chairman and has been appointed to the board of Tennis Central
- Regional tennis has been managed by Tennis Central with juniors and women's numbers increasing
- Tournament planner is available for clubs to use
- Adoption of reports Peter Feakin/Barry Yandle

Financial report meeting held two weeks prior to the AGM. Require a split of Squash activities. The balance between squash and tennis is shown in the executive account

Moved adoption of the financial accounts including the note on page 49 John Donaghy/Barry Yandle

Discussion by the trustees wanting a timeline on a resolution was requested. Tennis are required to provide proof of figures. The explanations and assumptions provided are hard to prove and Wayne has had trouble accepting this on tennis's behalf.

Stokes Valley are wanting to help for fund applications

National Seniors teams competition is being helped at Mitchell park and local Hutt clubs.

ELECTION OF OFFICERS:

Nomination for Dick Werry to be made a Life member of the Hutt Valley Tennis Association.

Paddy Wells/Wayne Dahlberg -passed unanimously

Paddy who is also a life member outlined Dick's achievements with a description of the many tasks that Dick has done including interclub, tournaments, player, administrator, maintainer, councillor and organiser over at least 20 years.

President: – one nomination – Wayne Dahlberg. Moved John Horrocks / Seconded Joe Glover. Carried.

Secretary: - one nomination - Craig Eves . Moved. Brenda Hood/ Seconded John Donaghy Carried.

Treasurer: - one nomination - Ross Bisley Moved Val singer / Seconded Cilla Heymer. Carried.

ELECTION TO MANAGEMENT COMMITTEE:

The following were nominated to the Management Committee; Peter Calder, Trevor Dine, Joe Glover, John Horrocks, Les Stewart, Moved Val Singer / Seconded John Donaghy. Carried.

Auditors: - one nomination – Markham, Miller Dean . Moved Barry Yandle / Seconded Val Singer. Carried.

Honorary Solicitor: No nominations - appointment held over.

MEMBERSHIP FEE AND DEVELOPMENT LEVY.

- The Management Committee recommended no changes to the affiliation fee.

OTHER BUSINESS:

- Senior interclub Prize giving not held –
- Flexi court trial for 17 /18 September at Petone
- Open day at Mitchell Park 17 September
- Champions of Champions to be held
- The President then called the meeting to a close. Meeting Closed at 10:00pm

